



Neighborhood Watch Participant's Handbook



**Sacramento County Sheriff's Department
North Division**

Revised
January 2015

How to Call the Sheriff's Department	Page 3
9-1-1	3
Emergencies	3
Deputy Responded Calls	3
Non-Emergencies	4
Crime Reports	5
On-Line Crime Mapping	5
Service Center Calls	5
On-Line Report Calls	5
The Role of the Community in Neighborhood Watch	6
Neighborhood Watch Coordinator's Role	7
Neighborhood Watch Member's Role	7
Neighborhood Watch Signs and Decals	7
Neighborhood Watch Map and Roster, samples	8-10
Developing Awareness	11
Recognizing Suspicious Activity	12
Recognizing Suspicious Persons	12
Recognizing Suspicious Vehicles	12
Describing and Reporting immediately	13
Home Protection	14
Telephone Security	15
Confrontations	15, 16
Protection your Home While on Vacation	16, 17
Finding an alarm company	17, 18
Detering burglars	19, 20
Working with Your Neighbors to Prevent Crime	21- 23
Mail theft, ID Theft and Free Credit Report or Alert	23-26

Materials provided to your group may not copied or reproduced in whole or in part in any form without express written consent. These materials are not for distribution on the internet. All materials are current and are for your group and for other Sacramento County Sheriff's Neighborhood Watch groups that are established.

Active groups shall have a leader who has received training from the Sheriff's Department. This Neighborhood Watch leader shall continue to learn and help other members practice crime prevention.

Neighborhood Watch is a strong crime prevention tool.

Persons not associated with the Sheriff's Department or other unofficial groups who are untrained may commit unsafe acts whereby possibly hurting others or themselves. Untrained members may be repeatedly victimized by not properly practicing crime prevention deterrents.

HOW TO CALL THE SHERIFF'S DEPARTMENT

If you call 9-1-1 from a cell phone, you will get the California Highway Patrol (CHP)

24 hour numbers

SHERIFF EMERGENCY	874-5111
SHERIFF NON EMERGENCY	874-5115
CHP	861-1300

Emergencies

When to call 9-1-1

- ✓ Crimes in progress
- ✓ Life threatening emergencies
- ✓ Suspect is present
- ✓ If a patrol officer was dispatched at this Very moment and there is great probability that the suspect can be apprehended for his crime.

If you are attempting to report a life threatening emergency, criminal in nature or not, or a crime in-progress, simply dial 9-1-1. Take a few slow deep breaths to help yourself stay calm. Do not call your husband, wife, parent or neighbor first, remain calm and dial 9-1-1 to get the help on the way.

If you live in the County of Sacramento and you dial 9-1-1 from your home phone, you will reach the Sacramento County Sheriff's Department Communications Bureau. When the call taker answers, state specifically what 'type' of emergency you are reporting. If it is a fire or other medical emergency you will be immediately transferred to the County Fire Department Communications Center. If you are reporting a vehicle emergency you will be immediately transferred to the California Highway Patrol Dispatch Center. Please let the Dispatch center direct the line of questioning. We know what questions to ask to get a call put into the system as quickly as possible and help on the way. If we have determined that it is not a 9-1-1 emergency, we will ask you to call the non-emergency line or direct you to the correct agency.

Other Emergency Calls - Call for Service or Dispatched Calls 9-1-1 or 874-5111

In progress, violent, people crimes, where suspect is present are our highest priority crimes.

Examples: Assaults with a deadly weapon, physical fights in progress, officer needs help-shots fired, robbery in progress, home invasion, felony DUI, physical domestic violence in progress, child abuse, missing child, citizen holding subject, felony hit and run, explosion, bomb threats, shots fired-in progress, prowler, panic alarm,. shots fired- in progress or just occurred.

Just occurred within 5 minutes, people and property crimes. 9-1-1 or 874-5111

Examples: Assault just occurred, fight just occurred, combative patient, hang-up 9-1-1 calls, kidnapping just occurred, robbery-purse snatch, Dom Viol restraining order violation, family disturbance, indecent exposure in progress, silent burglary alarm, grand theft in progress or just occurred, bomb threat report, terrorist threat, mental subject, dead body, recovered or stolen vehicle, reports of: robbery, sexual assault, assault with a deadly weapon, sex crime against a child, shots fired at dwelling, indecent exposure, elder abuse. Disturbances with customers, tenants, neighbors, vehicle driver, fraud- just occurred, petty theft.

In progress people concerns, cold reports both misdemeanor or felony. 874-5115

Examples: Any disturbance, incorrigible juvenile, audible house alarm, suspicious occupied vehicle, suspicious subject or solicitor, suspicious circumstances, meet the officer, pick up evidence, welfare check, Contributing to delinquency of a minor, loud noises, juveniles having a party, threats w/ gun report, business or residential burglary report, forgery/fraud report, grand theft report, petty theft just occurred, vandalism just occurred, trespass in progress, drunk and disorderly, meet the citizen, prostitute soliciting, attempt contact, attempt locate, embezzlement, recovered stolen property, standby, POP project, Examples: illegal dumping, unoccupied suspicious vehicle, illegal hunting, eviction, defrauding restaurant from bill, assist with fires, crime scene investigation, found property, patrol request, training exercise, report writing, bar check, bench warrants, stake out, follow up, informational event, stranded motorist, vehicle stop, wave down, search- directed operation, crime sweep, warrant sweep or curfew sweep.

Non-Emergencies

Crime reports can be made at the Sheriff's Service Center 876-5700 or on line at www.sacsheriff.com

When you call the Sheriff's Department non-emergency line at 874-5115, your call will be answered by an automated attendant.

Push 1 -for a crime or deputy

Push 2 -for jail information

Push 3 -for service center information

Push 4 -other services

Push 5 -nuisance abatement or animal care and regulation

Due to the high volume of calls you may be on hold a few minutes or longer, but please be patient, emergency calls take priority to non-emergency calls.

When to call the Sheriff or Highway Patrol

- ✓ Call when you are observing or hearing behavior that is suspicious.
- ✓ Call when you are a victim of a property or person crime.
- ✓ Call when you have a question.

Why call law enforcement and report crime.

- ✓ Call to inform of their crime and find out how not to be a victim
- ✓ All crime reports are read by a Detective Sergeant.
- ✓ Staffing levels and budgets in Division are based in part on reported crime.
- ✓ Patrol officers recover stolen identifiable property, which can be returned to the victim.
- ✓ Suspects can be charged with additional counts of stolen property.
- ✓ Crimes in a series are pieces of a puzzle that can be linked together. A small piece may tie it together.
- ✓ Property without serial numbers/driver's license numbers may sometimes be identified and returned.
- ✓ You have very little chance of recovering the property or arresting the suspect if no report is filed.
- ✓ Call to provide statistical support.
- ✓ Your call validates why resources are targeted to particular areas.
- ✓ Your call presents a picture that prompts discussion, better enabling all community partners to contribute, rather than following the view of one single partner.
- ✓ Your call provides a base to monitor, analyze, predict and measure targeted responses.
- ✓ Helps to raise the profile, perform better resource allocation, consult more effectively with the partner groups and the local community and establish what initiatives work.

Crime Reports

Make sure you don't need a deputy to take the report in person or over the telephone.

Sacramento County does NOT take online reports pertaining to assault; robbery; sexual assault; violent crime; domestic violence; terrorist threats; theft from person; residential burglary; violation of protection orders; stolen cars; car accidents; hit and run accidents; arson; biased crimes; parental kidnapping and burglary of business, apartment, or rental storage. *These incidents should be reported by calling 916-874-5115 (non-emergency).*

Non-dispatched crime reports can be filed on-line at on our reporting system at www.sacsheriff.com 'Crime Reporting' or the Sheriff Service Center can assist you in taking your crime report. **The Sacramento Sheriff's Department online reporting system allows citizens to submit an online report that occurs in the unincorporated Sacramento County and Rancho Cordova jurisdictions.** A valid email address is required to submit an online report.

SERVICE CENTERS

Dewey Service Center

5484 Dewey Dr #235

(916) 903-7480

Monday- Friday 8:00AM to 5:00PM

Hazel Service Center

5229 Hazel Ave. #B

(916) 876-5700

Wednesday-Thursday 9:00AM to 4:00PM

On-Line Crime Mapping

Go to www.crimereports.com to know what crime is occurring in your neighborhood or other areas in the county.

The Sacramento County Sheriff's Department has contracted with CrimeReports.com in order to provide a tool for crime prevention, community awareness, and data transparency. Citizens can view most reported crimes reported to the Sheriff's Department and sign up for crime notifications based on user-defined parameters (e.g., geography, crime types, frequency, etc.). CrimeReports.com also has a free iPhone App available via the iTunes Store so that citizens can view crime information on the go.

The Sheriff's Department uploads completed crime reports to CrimeReports.com on a daily basis. The data does not include general calls for service or police activity where no crime report was taken. In addition, some case types are withheld in order to comply with law and protect victims' rights, such as in most sexual assaults, crimes against children, domestic violence and calls that are medical in nature. Some case data may change if the investigation is ongoing and more information about the crime is learned.

The Role of the Community in Neighborhood Watch

Ask anyone whose home has been burglarized... the shock and helpless anger accompanying the discovery that an intruder has entered one's home will not easily be forgotten. The damage may be minimal or major, the losses slight or catastrophic. The incident may or may not have involved injury to a family member – yet one hard fact remains: another statistic has been added to the ever-growing list of burglarized homes. The burglar won again – and has no doubt vanished, leaving no real clue to lead to his arrest.

Is Your Neighborhood Ready to Resist Crime? Or Is It a Target for Burglars? It's Up to You!!

Chances are good that a home burglarized today is located in a neighborhood where one vital prevention tool is missing: an active NEIGHBORHOOD WATCH group. This community-based organization of citizens working together with law enforcement has become the key to preventing burglary and crime nationwide.

The National Sheriffs' Association created the National NEIGHBORHOOD WATCH Program in 1972, with financial assistance from the Law Enforcement Assistance Administration, to unite law enforcement agencies, private organizations, and individual citizens in a massive effort to reduce residential crime. A work plan emerged for use by sheriffs, police, and citizens for putting together local neighborhood-based programs. Since its establishment, NEIGHBORHOOD WATCH has developed thousands of such local residential crime prevention programs.

Neighborhood Crime Prevention: A Joint Responsibility

The prevention of crime – particularly crime involving residential neighborhoods – is a responsibility that must be shared equally by law enforcement and private citizens. The fact is, the impact on crime prevention by law enforcement alone is minimal when compared with the power of private citizens working with law enforcement and with each other. NEIGHBORHOOD WATCH is based on this concept of cooperation, and nationwide statistics prove that it works. When citizens take positive steps to secure their own property and neighbors learn how to report suspicious activity around their homes, burglary and related offenses decrease dramatically.

NEIGHBORHOOD WATCH AREAS Show Crime Drops

Throughout the United States, dramatic decreases in burglary and related offenses are reported by law enforcement professionals in communities with **active** NEIGHBORHOOD WATCH programs.

Statistics show that when a concerned citizenry does its part, the possibilities are endless...and the results positive. NEIGHBORHOOD WATCH is now the most successful anticrime initiative in the country and the most effective and least expensive tool for restoring the safe, pleasant environment we all want for our families! This is homeowners' insurance that works!

Program Coordination

The Neighborhood Watch Coordinator

The Coordinator's job is crucial to the success of your program. This may be just the right job for a retiree or other individual who has extra time at home. This person's responsibilities include:

- Expanding the program and maintaining a roster and map of 12-15 homes and those residents, including names, addresses, best contact telephone numbers, and email addresses. Providing a copy of this roster/map to the participants and to the Sheriff's Department;
- Acting as liaison between other local Neighborhood Watch groups, members, law enforcement officers, civic groups, this should include attending Sheriff Community Meetings and an email distribution list or telephone tree; and regular communication between members
- Arranging neighborhood crime prevention training programs;
- Obtaining and distributing crime prevention materials, such as crime statistics, resource materials, decals and signs;
- Encouraging participation in "Operation Identification," a nationwide program in which personal property is marked legibly with a unique identifying number to permit positive identification if valuables are lost or stolen.

The Neighborhood Watch Member

Everyone's participation is needed. Without cooperation and communication, the program will not be effective and bad guys will feel at ease in your neighborhood.

- Working at getting to know your neighbors and communicating with them regularly.
- Immediately recognizing and reporting suspicious behavior to the Sheriff's Department.
- Reporting all crimes and filing a report if you do become a victim.
- Making your own homes and families less inviting targets for crime.
- Changing some of your behaviors, so you are less likely to be a crime victim.
- Cooperating with law enforcement through block and neighborhood groups to control crime through-out the community.

Neighborhood Watch Decals and Neighborhood Watch Signs

Decals are supplied to only the Neighborhood Watch Coordinator after the roster and map have been distributed to the Sheriff Department and members. One decal per home and a maximum of 25 decals per group are provided free.

Signs must meet the guidelines of the National Sheriff's Association. Each group is responsible for funding and installing their own signs. Neighborhood Watch Coordinators are responsible for determining if signs are needed for their group. Signs may either be installed by the Department of Transportation or by the Neighborhood Watch members. Rules vary for types of installation. Signs must be installed correctly. Signs on County light standards must be approved in advance before installation by Department of Transportation.



(Boris the Burglar)

The Neighborhood Watch Map and Roster

In order to be considered an Active Neighborhood Watch your group must distribute to the members and the Sheriff's Department the Neighborhood Watch map. The map shows the street, location of the houses with names and address listings and the roster has phone contact numbers email addresses and the Coordinator puts together an email distribution list to disseminate information to its members.

***Neighborhood Watch Coordinator**

****Block Captains**

Saddle Rock

1820 Jan and Michael Smith
1821 Kerri Reilly

(916) 488-1230
(916) 823-9588

jan@aol.com

KReilly@surewest.com

Wildcreek Dr

Mossy Oak Lane

Sheriff Emergency 874-5111

Sheriff Non-Emergency 874-5115

The Watch map and roster is the responsibility of the Neighborhood Coordinator.

Each group is run differently and there is no 'exact' method that works for everyone.

An essential part of the Neighborhood Watch program is the Neighborhood Watch map/roster. It should be completed with names, addresses, phone numbers and emails of your group. Residents and the Sheriff Department should be provided updated new copies every two years. Please date the map and keep the map somewhere safe, accessible and easy to find. It is valuable tool used in maintaining your neighborhood security.

With the map, you will be able to see, at a glance, the individual residences on your street, and their relationship to the surrounding area.

Your map should be easily legible-clearly identifying surroundings areas (major cross streets) and individual residences.

Each address should be listed; even if the residence is vacant or not participating. You can designate non-participating house, as not participating. (NP)

Invite newly established law-abiding residents to join and notify them of meetings.

The roster should include work, home, email contact information. Provide the Sheriff's emergency/non-emergency phone numbers and Sheriff Service Center phone numbers as well.

When you call to report activity occurring on your block, down the street or behind you, the map will help you report the location and contact information accurately.

Member's Name	Address	Day phone	Evening phone	Email

NEIGHBORHOOD WATCH COORDINATOR _____ Cell _____

SHERIFF Emergency 874-5111 CHP 861-1300

SHERIFF Non-Emergency 874-5115

SHERIFF Service Center 876-5700

Date Map created: _____

The map should reflect the physical shape of your street(s) and intersecting street. Each house should have the correct address shown. Place the North arrow ^ direction on the map.

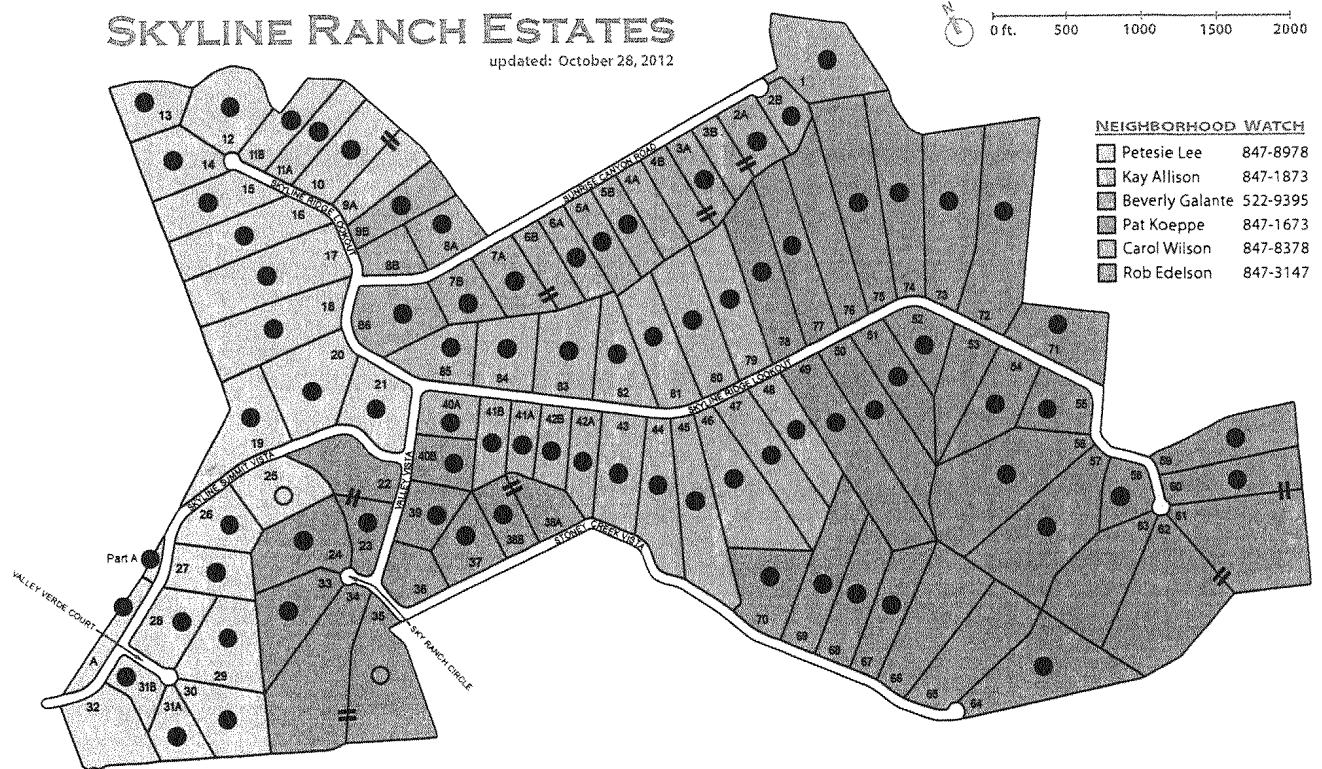
The map may be hand drawn or drawn on the computer.

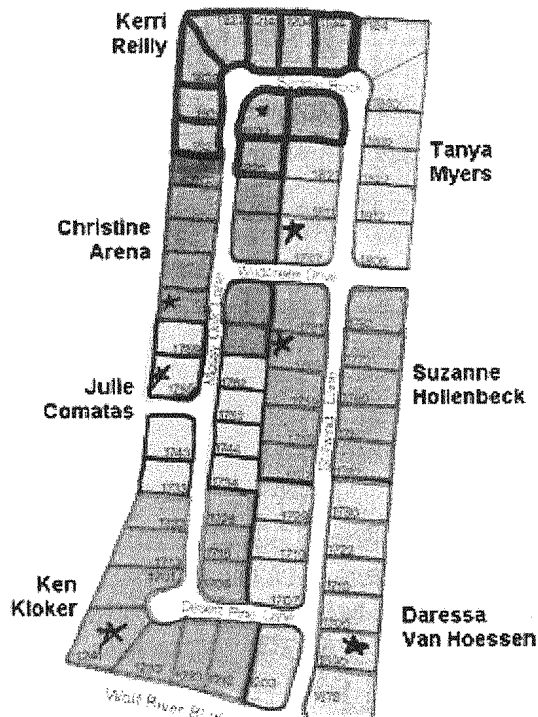
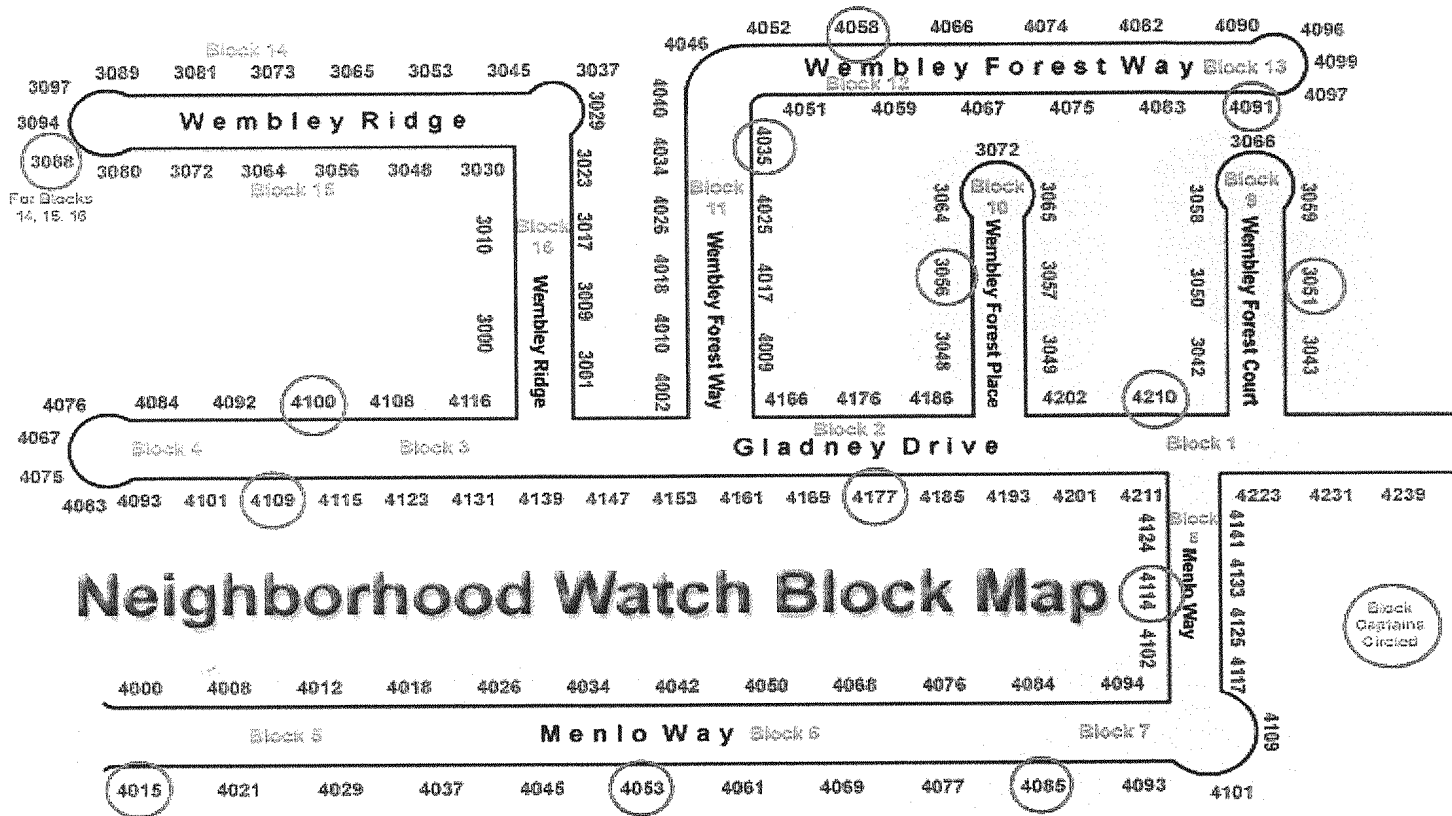
The map should be copied and given to all participants in the Neighborhood Watch.

This confidential document is not provided to anyone other than members and is protected information. Member's information will not be copied, nor their information released.

We request that you provide a copy to the Sheriff's Department so that we can verify that the roster/map has been completed. We place the roster/map in a locked file cabinet in a locked room and this information is not used for contact purposes.

SAMPLE





Developing Citizen Awareness Through Crime Prevention Programs

Recognizing Suspicious Activity

BE ALERT. Anything that seems slightly "out of place" or is occurring at an unusual time of day could be criminal activity. **DO NOT ATTEMPT TO APPREHEND A PERSON COMMITTING A CRIME OR INVESTIGATE A SUSPICIOUS ACTIVITY.** Call the police or sheriff's department immediately, and do not worry about being embarrassed if your suspicions prove to be unfounded. Law enforcement officers would rather investigate than be called when it is too late.

The following incidents MAY indicate possible criminal activity and should be reported:

- Suspicious door to door solicitation or persons representing a business that comes to your door.
- Continuous repair operations at a nonbusiness location (stolen property being altered);
- Open or broken doors and windows at a closed business or unoccupied residence (burglary or vandalism);
- Unusual noises, such as gunshots, screaming, or dogs barking continuously (burglary, assault, or rape);
- Sound of breaking glass (burglary or vandalism);
- Large volumes of traffic on foot or by vehicle that comes to homes for short periods of times.
- Unusual work activity in the garage and at odd hours of the night.
- A person exhibiting unusual mental or physical symptoms (person may be injured, under the influence of drugs, or otherwise needing medical attention).

Time and accuracy are critical in reporting crime or suspicious events. Use your law enforcement agency's emergency number to report life-threatening incidents or a crime in progress, and use the non-emergency number for crimes that have already occurred. Your call could save a life, prevent an injury, or stop a crime. The information you provide will be kept confidential. You do not need to give your name, although this is often helpful.

Suspicious Persons

Obviously, not every stranger who comes into a neighborhood is a criminal. Legitimate door-to-door sales and repair people appear in residential areas frequently. Occasionally, however, criminals disguise themselves as these workers; therefore, it is important to be alert to the activities of all nonresidents. Law enforcement officials should be called to investigate persons in the following circumstances, who may be suspects in the crimes indicated:

- Going door to door in a residential area, especially if one or more goes to rear of residence or loiters in front of an unoccupied house or closed business (burglary);
- Forcing entrance or entering an unoccupied house (burglary, theft, or trespassing);

- Running, especially if carrying something of value or carrying unwrapped property at an unusual hour (fleeing the scene of a crime);
- Heavy traffic to and from a residence, particularly if it occurs on a daily basis (drug dealing, vice or fence operation);
- Screaming (rape or assault);
- Loitering around or peering into cars, especially in parking lots or on streets (car theft);
- Loitering around schools, parks or secluded areas (sex offender);
- Offering items for sale at a very low price (trying to sell stolen property);
- Loitering or driving through a neighborhood several times or appearing as delivery person with a wrong address (burglary).

Suspicious Vehicles

Vehicles in the following situations MAY be involved in crimes and should be reported to authorities:

- Slow moving, without lights, following aimless course in any location, including residential streets, schools, and playgrounds (burglar, drug pusher, or sex offender);
- Parked or occupied, containing one or more persons, especially at an unusual hour (lookouts for a burglary or robbery);
- Parked by a business or unoccupied residence, being loaded with valuables (burglary or theft);
- Abandoned in your neighborhood (stolen car);
- Containing weapons (criminal activity);
- Someone, especially a female or juvenile, being forced into a vehicle (kidnapping, assault, or attempted rape);
- Business transactions taking place in it, especially around schools or parks (sale of stolen items or drugs);
- Persons detaching mechanical parts or accessories from it (theft or vandalism);
- Objects being thrown from it (disposing of contraband).

Describing and Reporting of Events, Vehicles and Persons

Practicing to develop skill in providing quick, accurate descriptions is an excellent NEIGHBORHOOD WATCH meeting activity. In attempting to describe events, vehicles, or persons, write down the details

of what you have observed while they are still fresh in your mind, so your descriptions to law enforcement officials will be as accurate as possible.

Describing Events When describing events, write down:

- What happened;
- When it happened;
- Where it occurred (note the nearest cross street, home address, or landmark in relationship to the event);
- Whether injuries are involved (Be prepared to report visible or suspected personal injury. Be as specific as possible - this could save a life!);
- Whether weapons are involved (this information, whether observed or suspected, is vital to responding officers).

Describing Vehicles When describing vehicles, write down:

- Vehicle license number and state, make and type of vehicle, color, and approximate age;
- Special designs or unusual features, such as vinyl top, mag wheels, body damage, pinstripes.
- Direction of travel.

Describing Persons

In preparing descriptions of persons, it is important to write down the following:

- Sex, race, age, Height (estimated from eye contact level measured against your height); Weight, Hair (color and length), Hat, Facial Hair, Shirt, Pants, Shoes, distinguishable mannerisms, physical disabilities, disfigurements, scars or tattoos, Voice characteristics, Direction of movement.

Home Security Protection Measures

You must be aware of the potential risk of crime in your home in order to prevent it. First...Remember that the key factor in most crimes is OPPORTUNITY. IF THEY CAN'T GET AT IT, THEY CAN'T TAKE IT! Then...follow a regular plan of home security to deter the potential burglar or other intruder.

- Use a timer or photo electric cell that automatically turns a living room light on at dusk, particularly if you are going to be away at that time; Mimic your movements in the house with lighting timers.
- Leave a radio on with the volume turned low when leaving home, even for short periods;
- Always close and lock garage doors;

- Secure automatic garage door transmitter in glove compartment of your car;
- Secure all obvious (and not so obvious) points of entry to your home. Pretend you are the burglar...stand outside your home and plan how you would get in; then install secure locks on all doors and windows;
- Lock up all ladders, ropes, or tools that could help a burglar gain entry;
- Keep all shrubbery trimmed near your doors and windows-don't provide concealment or climbing platforms for the burglar;
- Brightly illuminate all entrances, preferably with vandal-proof fixtures;
- Keep your grass cut, your leaves raked, etc., to indicate a well cared for and occupied home;
- Empty your mailbox or arrange to have it emptied as soon as mail is delivered;
- Install new locks when moving into an apartment or previously owned home;
- Keep extra keys out of sight and in a safe place; never hide a key outside--most hiding places are obvious to burglars;
- Avoid displaying valuable items near windows with open drapes or shades;
- Never leave a note on the door explaining why you are not at home;
- Never leave doors or windows unlocked when leaving home;
- Display only your last name on your nameplate or mailbox;
- Start a "buddy system" with you neighbors in order to watch each other's homes; watch for "movers" or "repair people" at a house where no one is home.

Daily Telephone Security

- Never give personal information (name, age, address, etc.) to a stranger on the telephone;
- Never let a stranger on the telephone know when you will or will not be home;
- Never let a stranger on the telephone know you are home alone; instruct babysitters never to tell anyone who calls that they are home alone with children;
- Teach children old enough to be left alone never to tell a stranger who telephones those parents are gone. Teach them to say, "My mom can't come to the phone now. May I take a message?"
- Credit card/Social Security #, etc. Do not give out a credit card or social security number to someone who you do not know or whom you did not call.

Confrontations with Intruders

If the suspect is confronted or is aware that you saw him, he will leave your sight. If he is a criminal, he will go down the street, remain in your neighborhood and victimize a different neighbor. Please call a Sheriff Deputy to identify and detain him.

Do not confront an occupied suspicious vehicle or person. You will better serve your neighborhood by being a good witness and a reporting person. Do not go outside to look or follow anyone.

A deputy can do things that you can't. Because you called and described that person as a suspicious person or involved in suspicious behavior, the deputy can respond and:

- Use probable cause to stop and detain that person
- Observe that person for behaviors showing intoxication or drugs/alcohol
- Question that person as to why they are at this location
- Identify them and require proof of identification
- Check their name for warrants, searchable probation, or parole
- Arrest them if they have warrants
- Search them if they are on probation or parole
- Search their vehicle
- Arrest them for possession of illegal substances, guns, paraphernalia, and stolen property
- Ask them to leave
- Cite them
- Take them to jail

A deputy responding to your street gives a message to strangers and other neighbors that you're alert, aware, watching and reporting suspicious behavior.

CALL NOW, AT THAT MOMENT. DON'T IGNORE OR THINK LITTLE OF ODD BEHAVIOURS OR ACTIONS. DESCRIBE WHY THE PERSON IS SUSPICIOUS. CALL 874-5115.

It's much better for deputies to approach an occupied suspicious vehicle when its there, then to respond to a scene where the witness became the victim. If it is a crime, and the suspect is there, call 9-1-1 for help.

Develop the habit of surveying your street when you leave home or are driving through your neighborhood. If you see someone suspicious, an occupied suspicious vehicle, just observe them quietly and be a good witness. If it's unusual and suspicious, report it immediately.

If upon arriving home, you note evidence that someone has broken in, DO NOT ENTER. Go to the nearest phone and call the sheriff's department. Should you confront a burglar, the very first rule is: GET OUT OF HIS WAY!! Never get between a burglar and the exit, and never try to stop him. It may cost you your life!

Protecting your home, when going on Vacation

PREVENT BURGLARIES WHEN YOU ARE AWAY FROM HOME

A vacant house — or one that appears to be vacant — is an appealing target to a burglar. This is true during the work day when everyone may be at work or school or during a vacation, a weekend away from home, or a business trip. You can alleviate day-to-day worries and make a trip more carefree if you will take a few simple steps to reduce the possibility that your home will be burglarized or vandalized while you are gone. Although you should always be aware of leaving windows and doors closed and locked whenever you will be out of the home, there are a number of things to consider when you're going to be away for a weekend or longer.

To help you remember, carry this list with you as you prepare to leave, and check off each item as you do it. Returning to a home that has been broken into is an unpleasant finish to any trip. Never give a burglar an even break.

At least one day before you leave

1. Arrange with a neighbor to pick up and hold your mail and newspapers so they don't pile up. If this is not possible, notify your news carrier and the post office to discontinue these deliveries.
2. Make arrangements to have grass cut and watered while you are gone. Have someone check daily to remove throwaway papers and circulars from your doorway and yard.
3. If you have valuables in the house, take them to your bank for storage in a safety deposit box. Deposit extra cash in your bank account.
4. Notify your sheriff's office or local police station about your departure and return dates and give a name and telephone number of a neighbor or relative to notify in case of a burglary, fire or other emergency.
5. Make sure any broken windows, door locks or window locks are repaired.
6. Arrange with a neighbor or relative to watch your house and give them a key. Let them know where and how you can be reached in an emergency. Write their telephone number down so you can check with them during your trip. Give them your car description and license number.
7. Move all ladders, tools, lawn implements, garbage cans and yard furniture to your garage, basement or storage shed.

On the day you leave

1. Unplug all electrical appliances such as radios, television sets, irons, washers, and fans to prevent possible damage from electrical storms.
2. Set your thermostat so that your furnace or air conditioner will maintain a reasonable temperature — 80 degrees Fahrenheit in the summer and 55 degrees Fahrenheit in the winter. In winter, make sure outside water taps are drained to prevent freezing.
3. Close your fireplace flue to prevent birds or animals from entering.
4. Make sure all gas appliances are in good order and that pilot lights are working.
5. Turn off water to automatic washer to prevent possible damage from a broken hose.
6. Turn down the volume control on the bottom of your telephone and answering machine so it cannot be heard from outside.
7. Close and lock all windows and sliding doors. Make sure that a "Charley bar" is secure on sliding doors, and that all screens or storm windows are locked or fastened.
8. Put window shades in normal daytime position, and make sure all main floor drapes, shades and curtains are arranged so that neighbors and police can see into your house.
9. If you are leaving a car or other vehicle in your driveway, make sure it is locked.
10. Set your electrical timer to turn some lights on and off during the evening hours.
11. Lock your garage door.
12. Make sure the last person out locks the door. Take a walk around the house. Check the doors and windows.
13. If you haven't already done so, leave your key with your trusted neighbor or relative. Check to make sure you have their telephone number.



Finding an Alarm company for Your Home.

The Sheriff's Department does recommend alarms. But, they may not be needed for everyone. Contact the Sheriff's Alarm Bureau for permits/ questions at 874-4616 or www.sacsheriff.com

Get the first two estimates in writing. Check around on prices. Just like anything, the third person/company that you bring out will offer you a really good price. During vacation months, prices for equipment and installation may be higher than in the fall or winter.

Before you hire an alarm company, get their references and contact clients of recent projects. The installer must have a C7 contractor's license, but only if the cost of the contract is more than \$500. Get their license number and contact the contractor's license board at www.cslb.ca.gov to see that they have a valid license are bonded and have no complaints on file. Also, check with the Better Business Bureau. Contractors are required to put their business license number on the business card and contract. Ask to see the contractor's "pocket license" or "Home Improvement Sales Registration". Ask to see some additional form of identification so you can confirm their identity and that they are not working under someone else's license.

It's not uncommon for companies to hire technician, contractors or salesman with criminal histories. Never let any stranger walk around in the house by themselves or have complete access to your home. PUT ALL VALUABLES AWAY. Don't let strangers see where you have a safe, store guns, etc.

Ask a lot of questions: How much is this whole thing going to cost up front and then monthly? How long are you contractually obligated? What if you don't like it, can you uninstall it? Is labor included? What kind of warranty does this have? Is there an additional charge for the alarm bell to be mounted outside? Are there wireless systems or can this alarm system come with a laptop/phone app that can be monitored from vacation/work?

How sensitive is the alarm if it's a motion sensor. Will a spider, AC, balloon, plant, or cat set it off?

What's their procedure for getting ahold of you if the alarm goes off?

What verification do they ask to check for proper code from the owner?

How long does it take for them to call you, or do you call them if it's an owner error.

Can just the motion sensor be in the bedroom /hallway? Do automatic lights go on upon entry?

Should some or all of the windows be alarmed? Or just the bedroom, laundry and the kitchen windows be alarmed?

If the door kick only affects just the door panel, will that set off the alarm? Panic pad reset buttons....how do they work? Can I pay for extra alarm stickers for my windows? Can I get 2 yard signs and a mounted sign for your gate as well? How long is the service contract for? Will you install this for free and provide me free equipment if I sign up for 5 years? If I don't like the system, how long do I have to cancel?

Sacramento County Sheriff's Department/ SCarhart

Have the sales person explain the operating manual of the system so that you completely understand.

Reporting and Prevention of Recycle Thieves

Yes it is a crime. A misdemeanor, but still it is unlawful and illegal to steal from recycling cans both on public streets, gated communities and private complexes.

The Sheriff Department can arrest and investigate for scavenging of recyclable materials. Generally, they will detain, identify and ask the scavenger to leave the area. They can write the scavenger a citation as well. Because of the time involved in the report and going down town to the jail and then driving back out into the community, arrests will seldom occur.

Please call patrol right away if you see anyone scavenging on the street. Get a good description of that person. Advise the dispatcher that they are there on your street now. **Call non-emergency (916) 874-5115 and ask for a deputy to respond.**

The scavengers know the schedule of which street is recycling. So please warn resident's to watch for them starting in the late evening when most people put out their cans.

Sacramento County Code defines..... "Scavenger" means individuals that are involved in the theft of recyclable materials that businesses, non-residential properties, multi-family residential properties, or owners have placed either in or near bins for recyclable materials for collections. "Scavenging" means the uncontrolled and unauthorized removal of recyclable materials at any point in the solid waste management system.

4.01.080 Ownership of recyclable materials. (a) All recyclable materials placed in containers for recyclable materials provided by the authorized recycler, shall be considered owned by and be the responsibility of the authorized recycler. Without permission of the authorized recycler, no person shall collect recycling materials. (B) All recyclable materials placed in recyclable containers shall be considered owned and is the responsibility of the owner. (C) Except it shall be unlawful for any person to engage in the business of collecting or removing recyclable materials unless they are a licensed and directed by the (SWA) Solid Waste Authority.

Deterring Burglars.

Burglars walk among us and are found around our neighborhoods. They look for opportunities. They look for low risk and some financial gain. They like it best when we are at work or gone on an errand or even possibly sleeping.

If the burglar is looking on your street, what house will he pick? He picks house with the least resistance, the lowest risk and the best opportunity for financial gain. Check out the Sheriff's crime prevention map to get a list of crime in your neighborhood.
www.sacsheriff.com or crimereports.com.

I absolutely guarantee you, that it is better to be prepared and prevent a burglary than to become one of 13,000 burglary victim's each year in Sacramento County. Please find time to look at your house as a burglar would and see if you can apply some of these deterrents to your 'to do' list at home.

SECURITY LIGHTING is a deterrent if you or your neighbors are watching. Decorative yard lights are not security lighting. Lighting is for you to see what's in your yard and driveway, not your guests or burglars. Point light downward and point it from your house, into your yard,

toward the street and driveway. Light does you no good, if you can't see what is in your yard and driveway. If you light up an area and no one is regularly there to watch that area, (neighbors should be able to see your property) it does not benefit you.

COMMUNICATION The more information that you share, the more you are aware of each other and what is happening on your block. Keep the email and phone lists up to date. Apprise new neighbors of Neighborhood Watch and get them involved.

Keep the NW Coordinator informed if you have a series of crimes, concerns or questions. Provide updated rosters to members when needed. Have a party. Hold an event. Take time to talk with each other. Be good neighbors. Watch out for each other.

SECURITY ALARM SYSTEMS DETER BURGLARS. They prevent high dollar loss in the event of a burglary. Alarm window or yard signs are of high value as well.

REINFORCE THE DOOR FRAME. One method of doing this is to replace one screw in each of the hinge plates with a 2-3" screw. This will reach past the door frame into the 2x4 studs behind the door frame. I firmly believe that plywood/pine frames are the easiest frames to kick in. Check to see what kind of door frame that you have.

SECURITY STRIKE PLATE is the metal piece on the door frame that the deadbolt "throw" goes into. It should be 4 or more inches in length and be mounted with two or more case-hardened screws at least 3 inches long.

DEADBOLTS are excellent and are recommended on each of your exterior doors. Just remember that deadbolts are only as strong as the material they are installed in. Don't be lulled into a false sense of security just because you have a deadbolt installed.

SINGLE CYLINDER DEADBOLT has a keyway on the outside and a turn knob on the inside. It is recommended on all exterior doors. (If there is glass within 40 inches of the door lock, it should be covered with a security grille to prevent reaching through the glass area to unlock it.) The throw bolt should extend at least 1 inch from the edge of the door, and it should have a hardened steel pin inside the throw bolt. The lock should be installed with at least two 1/4 inch case-hardened steel fasteners, and should have a tapered or rotating guard around the key section so that it cannot be compromised with a pair of pliers.

DOUBLE CYLINDER DEADBOLT is keyed in both the inside and outside, requiring a key to unlock it. It is the same as the single cylinder deadbolt, except the keyway on both sides of the door."

ALWAYS LOCK YOUR HOUSE. Make sure your doors are locked; even if you plan to be gone for only a few minutes. Even the best locks won't protect you if they aren't used. Most crooks are not professionals. If they can't open the door and walk in then the next best thing to do is smash a window or kick the door in...or go some place else.

PIN HINGES are recommended for exterior doors that open out. A hinged door that opens out has the hinge pins on the outside, making it possible to remove the pins and open the door from the hinge side. To prevent this, remove one of the screws of the hinge (on the door frame side) and drive a nail into the hole, leaving the nail exposed 1/2 inch. Then cut off the head of the nail. Remove the matching screw from the other half of the hinge. The nail should now fit into this second hole when the door is closed, connecting the two parts of the hinge and securing the door from being opened by removing a hinge pin from the outside.

INSTALL A 190-DEGREE VIEWER or a "peep hole". It should be installed in all exterior doors where there is no visibility from inside to see who is at the door.

DOUBLE DOOR ENTRANCES that have two swinging doors that close in the middle should have flush bolts installed on one of the doors. These bolts extend up into the frame at the top and down into the floor at the bottom, providing a base to lock the other door to.

REPLACE THE EXTERIOR DOOR that has hollow core construction, or that is in weakened condition due to age or weathering. If you replace the door-absolutely replace the frame with a solid hard wood as well.

GRILLE OVER WINDOW IN DOOR. Doors that are half wood/half window should be replaced or have a security grille installed over the glass part. Install this grille on the inside of the door, or use tamper resistant fasteners, such as round-headed thru-bolts, if installing the grille on the outside. (An alternative to replacing the door would be to install a security wrought iron door on that entrance.)

SLIDING DOORS. Install pan head screws in the upper track of the movable panel of all sliding doors. The purpose is to prevent the sliding door from being lifted off the track and removed from the frame when it is in the closed position. These screws have rounded heads and should be installed about 2 feet apart. They should be screwed in so that the door can just barely slide by, while preventing it from being lifted up out of the track. Also cut fitted doweling in the tracks. It should fit snugly. Never use 'something' else to keep the door snug. Get fitted doweling on your next trip to the hardware or lumber store.

USE A CHARLIE BAR OR A DOWEL. A Charlie bar is a commercially available device that mounts to the frame opposite the sliding door and swings down behind the door to stop it from sliding. A stick or dowel inserted snugly into the bottom track can be used in much the same way.

Pin Doors. With the door in the closed position, drill a small-diameter hole from the inside center frame through into the outside frame, but not through the outside frame. Insert a nail or other sturdy pin. To be most effective the hole should be made at a slight downward angle to prevent the pin from falling out if someone tries to lift the door up out of the frame. Caution: When drilling holes in the frame great care should be taken to avoid drilling into or striking the glass. Tempered glass will frequently shatter on contact with the drill bit.

Working with neighbors to prevent crime

Criminals know that they have the advantage with many adults in the households working during the week and they are using this opportunity to check out the neighborhood and decide which house has the least risk and is most vulnerable.

People on bikes, salespeople or persons walking in the neighborhood may be thinking of committing a crime or just checking your neighborhood out for a future crime. They could be there legitimately. Consider talking to them. If it's remotely dangerous, don't contact them.

Thieves on bikes working in tandem are a popular late night method of stealing in many neighborhoods. It's not new. Thieves wear hoods or hats and usually it's difficult to recognize them or describe their features. But if you have a video of them or possibly your neighbor saw them, you know that they are comfortable and may be profiting in your neighborhood. You can google these types of videos and see first hand how quickly thieves on bikes can work a house or neighborhood. If your neighborhood has daytime burglaries or auto thefts, the burglars may be walking or driving around taking a look and they feel pretty unstoppable.

No one questions them why they are there and they are free to check out whose home, what cars are there, the level of activity of the house, the houses with the least criminal deterrents and the neighborhood with the least amount of personal contact on the street. The burglar has no reason to leave or change neighborhoods and only a step up in crime prevention by residents and residents being proactive will keep him from returning. Call a deputy to respond. When a solicitor is stopped and detained by a deputy it is a deterrent from soliciting in that neighborhood. When a solicitor is questioned by a resident and told that you're calling the Sheriff, he just finds you annoying and usually continues soliciting.

If these are big concerns for you and your neighborhood, then a meeting is absolutely necessary. Prevention is absolutely the best thing residents can do, versus filing a crime report and trying to catch the thieves. The more crime preventative deterrents that you have in place, the less likely that you will become a crime victim.

#1 Know where your kids are at night. Keep them accountable for their whereabouts and their actions. Remember that curfew is 10PM for anyone under 18 years old. There are only a few school or work exceptions for curfew. Someone's kid is out of control and the parent may not know it. No one thinks their kid is a thief, but thieves are in almost every neighborhood. Even well behaved kids with no money concerns enjoy the adrenaline rush of stealing and the extra pocket money they get from stealing. If your kid all of a sudden has a new piece of clothing, jewelry, CD, cash or unknown item, ask where it came from and how did they get it. Their friends may be stealing and your kid may be learning from them.

#2 If it has value, its worth stealing. Lock everything. Suggestions include:

GARAGE: Double dead bolts in hinged doors going into the garage. The throw bolt should extend 1" or more from the edge of the door. It should have a hardened steel pin inside. The lock should be installed with at least two ¼" case-hardened steel fasteners which should have a guard around the key section so that it cannot be forced open with the burglar's pliers. Doors should be solid core doors with hardwood frames. Add larger strike plates at least 4" or more, replace 3" screws in the hinge plates of the doors, so that they go into the studs, jamb braces, replacing doors which have glass windows in the garage or cover with a security grille to prevent reaching through the glass. Most people will sleep through the sound of a door kick. It's not nearly as loud as the sound of breaking glass. Door kicks whether you are home or not are very popular. Put a metal or heavy wood movable brace against the door when not in use. If they can get into your garage, they certainly have plenty of time to go from the garage into your house. Don't let that happen.

PinTrack:

On garage doors that roll up or slide overhead on a track, drill a hole in the track that the door moves in, while the door is in the closed position, and install a pin or padlock into the hole to prevent the door from moving along the track

ElectronicDoorOpener:

Garage doors that are opened by remote control can often be opened by anyone possessing a remote control. These controls can be changed to different frequencies by turning small dials inside, until your frequency is found and your garage door opens. This method of entry is generally not used, because it actually takes a bit of know how and burglars don't usually use this technique.

Use a pin in the track to stop the door from moving when you are gone, or add an auxiliary lock. Consider unplugging your garage door opener if you are gone for a long period of time, such as a vacation. Further thought: I've also seen a video where burglars use a long thin stick with a string, reach through your tiny opening above your door and pull the pin on your electronic opener and pop it open. This takes less than 10 seconds. Then they use raise up the

door and they're in, GATES: Always shut and padlocked. Consider putting a warning sign on your gate. Alarm, dog, etc.

VEHICLES: Insist that all visitors who come in vehicles and who stay the night must remove all valuables from their vehicles including the trunk. Of course it's a hassle and they have to repack, but they will always remember your visit if they have a vehicle burglary outside your house. Your visitors are now in a big city and may not realize that crime could happen to them. Burglars count on that and look for visitors with maps and luggage that park on the street or driveway. So, remove all valuables from vehicles, including the trunk.

OLDER VEHICLES: Locks and ignition are easy to bypass because burglars have shaved keys for numerous cars, so older vehicles are easier to steal and to break into. Sacramento in 2009 was #11 in the nation with 11,906 auto thefts. CHP takes stolen vehicle reports, not Sheriff. 1. Remove your keys, 2. Lock your doors/close your windows. 3. Park in well-lit areas. 4. Set your alarm. 5. Put a club on your car. 6. Install an immobilizing device. 7. Install a tracking device.

#3 SECURITY LIGHTING is a deterrent if you or your neighbors are watching. Decorative yard lights are not security lighting. Lighting is for you to see what's in your yard and driveway, not your guests or burglars. Point light downward and point it from your house, into your yard, toward the street and driveway. Light does you no good, if you can't see what is in your yard and driveway. If you light up an area and no one is regularly there to watch that area, (neighbors should be able to see your property) it does not benefit you.

#4 ALWAYS REPORT CRIME: If your crime is not reported to the Sheriff's department, we don't know about it. Staffing levels are based in part on reported crime. Stolen property can not be recovered and returned to the victim if it is not reported stolen. If the suspect is found with your reported stolen property, he can be charged with additional count of stolen property. Reports provide statistical information for patrol and what areas are 'hot' for various crimes. When they can, Patrol Deputies will spend more time in areas with areas that are being targeted for crime. Your report validates why resources are targeted to particular areas. Your reports and concern present better discussion between neighbors and law enforcement. Your report helps provide a better base to monitor, analyze, predict and measure targeted responses. Your report helps to profile types of crime in your area and establish if these crimes are connected or if we have suspect information. Your report helps us know more about bad guys in your area and when they're working and when to catch them. Your neighbors deserve to know about crime in your area on our crime maps. Always get a report number and never say that you don't need a report. Never get talked out of filing a report by anyone. If you're a victim, get a report. Tell all crime victims to file a report with the Sheriff's Department. Home burglaries require a deputy to respond.

#5 DO NOT CONFRONT A SUSPECT:

Do not follow or confront an occupied suspicious vehicle. You would better serve your neighborhood by being a good witness and a reporting person. It makes good sense for a deputy to approach an occupied suspicious vehicle, detain the suspect and possibly arrest him. A deputy would rather catch the suspect then have the witness frighten him away or possibly find a victim who has become injured due to their participation in trying to stop a possible crime. Immediately call Sheriff Dispatch.

...ONLY CONSIDER TALKING TO A SUSPICIOUS PERSON, WHEN YOU ARE NOT PUTTING YOURSELF AT RISK AND FEEL COMFORTABLE IN APPROACHING THEM:

Each person's comfort level is different, you decide to make that decision of talking to them or not. What are they doing? Who is it that they are visiting? Ask for license information from door to door solicitors. I RECOMMEND THAT YOU NEVER OPEN YOUR DOOR TO A STRANGER. Talk through the door and let the solicitor know that you are home.

#6 BE A GOOD WITNESS: Write it down. Call dispatch immediately. Have Sheriff's emergency number on your cell phone.

Know the person's: race, sex, age estimate, height, weight, hair color, shaved head, glasses, facial hair, and clothing: Shirt color and type pant color and type. Direction of travel, type of vehicle, 2dr or 4dr, big truck, cargo van, paint color, license plate.

#7 WHEN TO CALL 9-1-1.

Crime in progress, life threatening emergency, fear of personal injury/safety, Suspect is present. If a patrol deputy was dispatched at this very moment and there is a great probability that the suspect can be apprehended for the crime.

#8 WHEN TO CALL SHERIFF OR CHP:

Call when you're observing or hearing behavior that is suspicious. This is a non-emergency. Call or file an online report when you are a victim of a property or person crime. If you're calling me, please email when ever possible for a better response.

#9 WHAT NUMBER DO I CALL: SHERIFF Emergency: (916) 874-5111

SHERIFF Non-Emergency (916) 874-5115

CHP DISPATCH (916) 861-1300

#10 ENCOURAGE PARTICIPATION OF NEIGHBORHOOD COMMUNICATION.

The more information that you share, the more you are aware of each other and what is happening on your block. Keep the email and phone lists up to date. Apprise new neighbors of Neighborhood Watch and get them involved.

Keep me informed if you have a series of crimes, concerns or questions. Provide updated rosters to members when needed. Have a party. Hold an event. Take time to talk with each other. Be good neighbors. Watch out for each other.

MAIL THEFT AND IDENTITY THEFT

If you think that you are missing mail, contact that business to find out if the bill was sent to you. Thieves are stealing financial documents and leaving ripped open empty envelopes and junk mail behind.

Your stolen mail may result in your becoming a victim of Identity Theft. Protect incoming mail. Pick up mail as soon as possible. Get a locking mail box or a mail drop inside your house. Have a neighbor pickup your mail if you are out of town or have the post office hold your mail. Always take your mail to the post office and drop it off inside. Never mail your outgoing mail from your house.

If you are a victim of mail theft, contact the US Post office and fill out their mail theft and vandalism complaint form. If you are a victim of identity theft you also will need to complete a Sheriff's Report. You can file the report with the Sheriff's Service Center, in person, over the telephone or on line at www.sacsheriff.com.

If you see anyone hanging around mailboxes or stealing mail, call the sheriff's emergency phone number or 9-1-1 for thefts in progress.

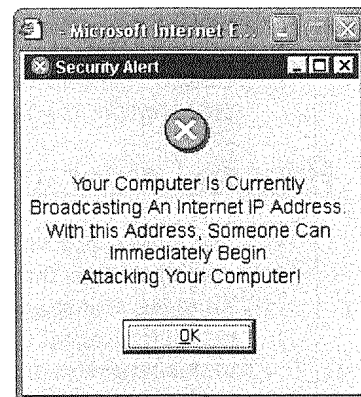
SUGGESTED STEPS TO REDUCE YOUR VULNERABILITY TO ID THEFT

Be alert, be careful

- Check your consumer reports (credit reports) annually at least, and before making a major purchase like a home or car. Dispute and remove errors or unknown accounts in the reports.
- Check bank and credit card statements and bills regularly. Report unauthorized transactions immediately and then in writing.
- Contact your financial institution if you're your statements or bills don't arrive on time to see whether they were mailed, or possibly intercepted or diverted to another address.
- Be cautious about sharing your information. Generally, refrain from giving personal information and account information out to others – via phone, fax, mail, or e-mail – If you have not initiated the communication in the first place.
- Choose your tax preparer very carefully, if you don't prepare your own tax return.
- If the IRS sends you a letter that leads you to believe someone may have used your social security number fraudulently, contact the IRS immediately as directed.
- Read a company's privacy and security policy in order to understand how your personal information will be used, disclosed and protected.

Added tips for online safety

- Install a firewall on your computer.
- Use anti-virus, anti-spam, and anti-spy ware software. Keep the software updated.
- Use parental controls and purchase child friendly browsers to protect children from unwanted spam and phishing e-mails.
- Keep your browser updated.
- Don't respond to requests for personal information from unsolicited e-mails or pop-up windows.
- Visit a web site by entering the web address – or "URL" – yourself into your web browser, not by clicking a link in an e-mail.
- When Downloading a program, game, etc., reading the provider's statement of terms will let you know what else you might be downloading that you may not want.
- Check that you use secure web sites for sensitive communications or transactions. When entering the URL, look for the "s" in the "Https" and the lock icon in the bottom right of the screen.
- Clean the hard drive before discarding any personal computer.



Protect your personal information

- At home and at work, secure important documents that contain your personal information where they are protected from unwanted view or access.
- Carry only the necessary cards and identifying information in your purse or wallet. Limit the number of credit cards and checks that you carry. Don't carry PIN numbers with your cards.
- Pick up receipts from ATMs, restaurants, stores, and gasoline pumps. Don't leave them lying around.
- Watch out for shoulder surfers watching you type in your PIN number at the cash register or ATM.
- Do not carry your social security card in your wallet. Do not pre-print your social security number on your checks or drivers or in the form of an account number. Ask why someone wants your social security number and how it will be protected before deciding to give it out.
- Deposit outgoing mail that contains personal information in a US Postal Service blue collection box or walk it inside the postal office if you can. Never use the red flag on your mailbox as it draws attention to waiting mail.
- Remove incoming mail promptly from your mailbox and consider some kind of lock mechanism to keep thieves out. Have the Post Office hold your mail if you are going away.
- Use strong passwords to protect access to your sensitive information and financial accounts.
- Don't create passwords using easy to guess or easy to obtain personal information, like birthdates or a pet's name. Make the passwords unique, mix letters with numbers and symbols. Change your passwords from time to time.
- Outsmart the dumpster diver by shredding documents containing sensitive information before throwing them out.
- Destroy expired or unneeded credit, debit, or ATM cards so that the numbers and magnetic strips cannot be read.
- Destroy expired driver's licenses or expired identification cards. Destroy medicine labels with your name, prescription, medical insurance numbers.

How do I order my free report?

- The three nationwide consumer reporting companies have set up a central website, a toll-free telephone number, and a mailing address through which you can order your free annual report. To order, visit annualcreditreport.com, call 1-877-322-8228, or complete the [Annual Credit Report Request Form](#) and mail it to: Annual Credit Report Request Service, P.O. Box 105281, Atlanta, GA 30348-5281. The form is on the back of this brochure; or you can print it from ftc.gov/credit. Do not contact the three nationwide consumer reporting companies individually. They are providing free annual credit reports only through annualcreditreport.com, 1-877-322-8228, and Annual Credit Report Request Service, P.O. Box 105281, Atlanta, GA 30348-5281.

For additional information www.consumer.gov/idtheft

Equifax: 1-888-766-0008; www.equifax.com; P.O. Box 740241, Atlanta, GA 30374-0241

Experian 1 866 200 6020 to request a copy of your personal credit report to be delivered by U.S. mail www.experian.com; You can request your credit report in writing by sending your request to P.O. Box 2002, Allen, TX 75013

TransUnion: 877-322-8228 ; www.transunion.com; Request your Free, Annual TransUnion Credit Report



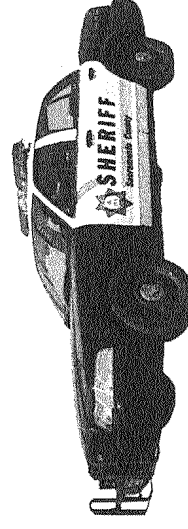
Sacramento County Sheriff's Department

Scott R. Jones
Sheriff

NORTH DIVISION PUBLIC INFORMATION DIRECTORY

www.sacsheriff.com

<http://www.sacsheriff.com/Pages/Services/ReportCrime.aspx>



EMERGENCY 9-1-1
Emergency 874-5111
Non-Emergency 874-5115

DEPARTMENT SERVICES

Alarm Bureau	874-4616
Gun Permit Information	874-5864
Identification Bureau	874-8093
Office of Information/Media Bureau	874-5021
Parking Enforcement Detail	876-6642
Property Bureau Information	875-5650
Records Bureau	874-5383
Recruitment Information	875-0085
Red Light Enforcement Program	876-6643
Towing Detail	876-6641
Adult Protective Services	874-9377
Animal Control push 2, for 24hr assistance	875-5232
Child Protective Services	875-5437
Restraining Orders	875-2654
Graffiti Abatement on public property (DOT)	875-5171
Graffiti Abatement on SMUD property	732-6043
Graffiti on private property	875-5656
Graffiti Abatement—	311
Transient Enforcement Team (TED)	874-1025

Neighborhood Nuisance Complaints

Animal Care, environmental health, building permits, planning, zoning or county code compliance and waste management
County resource questions— call 311

CORRECTIONAL FACILITIES

Sacramento County Main Jail	874-6752
Rio Cosumnes Correctional Center	874-1827
Juvenile Hall	875-6996

View inmate booking & location information at www.sacsheriff.com

INVESTIGATIVE SERVICES

Centralized Investigations Division	874-5041
Child Abuse Bureau	874-5191
Civil Division	875-2665
Hi-Tech Crimes Task Force	874-3002
Homicide Detail	874-5057
Identity Theft Task Force/Real Estate Fraud	874-3000
Robbery Detail	874-5051
Sexual and Elder Abuse Bureau/Crimes Against People	874-5070
Sex Offender Registration Detail (Recording)	874-5090

For burglary, vandalism, and assault report follow-up contact Detectives.

NORTH DIVISION

Dewey Service Center

5484 Dewey Dr. #235

(916) 903-7480

8:00am-5:00pm Mon - Fri

Hazel Service Center

5229 Hazel Ave. #B

(916)876-5700

9:00am-4:00pm Wed/Thurs

Commander; Captain L. Michael Gonzalez

874-1013

Assistant Commander; Lieutenant Darin Griem

874-1013

Problem Oriented Policing Sergeant Chris Guerrero 876-5729

Deputy Aaron Haydel Arden, Arden/Arcade, Fair Oaks

Deputy Dave Mcentire Rio Linda, No Hhlns, New Fthl Farms

Deputy Jason Gillock Carmichael

Deputy Ben Green Elverta, Antelope

Deputy Scott Brown Orangevale, Old Foothill Farms

District Attorney Community Prosecutors-

Joy Smiley 874-5877

smileyj@sacda.org

Ron Linthicum 874 3064

linthicumr@sacda.org

North Crime Prevention Specialist-

Sherrie Carhart 876-5717

scarhart@sacsheriff.com

Service Center Office Manager- 903-7480

Francie Fitzsimmons

mfitzsimmons@sacsheriff.com

North Division Detectives

Burglary and property crimes

Crimes Against Persons

North Division Information (8:00am-5:00pm)

875-5388

874-5070

874-1021

CALIFORNIA HIGHWAY PATROL (Dispatch)

861-1300

CHP POP -Problem-Oriented Policing

CHP -North of Amer Rvr 250pop@chp.ca.gov

338-6710

CHP -East of Sunrise 260pop@chp.ca.gov

464-1450

SAC COUNTY 311 CONNECT

311

COUNTY BOARD OF SUPERVISORS

Supervisor Roberta MacGlashan

macglashanr@sacounty.net

Antelope, Orangevale, Gold River, Rio Linda, Elverta

874-5491

Supervisor Susan Peters

susanpeters@sacounty.net

Foothill Farms, Carmichael, Arden, Fair Oaks, North Highlands

874-5471

Supervisor Phil Serna

SupervisorSerna@sacounty.net

McClellan, Garden Highway, North Highlands

874-5485

2015 COMMUNITY MEETING SCHEDULE

Meetings Held January, March, May, September, November

Arden, Arden-Arcade

1st Tuesday, 6:00pm

Sacramento Suburban Water District

NEW LOCATION

3701 Marconi Ave., Sacramento

May 5

Orangevale

2nd Tuesday, 6:00pm

Orangevale Recreation and Park District

6826 Hazel Ave., Orangevale (south of Oak)

May 12

Fair Oaks

4th Tuesday, 6:00pm

La Vista High School

4501 Bannister Rd, F.O.(North of Winding Wy) May 26

Old Foothill Farms

2nd Wednesday, 6:30pm

Pioneer Elementary School

May 13

5816 Pioneer Wy., Sacramento

North Highlands/New Foothill Farms

1st Thursday, 5:30pm

North Highlands Community Center

6040 Watt Ave, North Highlands

May 7

Antelope

2nd Thursday, 6:00pm

Antelope Library

4235 Antelope Rd., Antelope

May 14

Elverta, Rio Linda, Garden Hwy, McClellan

1st Wednesday, 6:00pm

Rio Linda Depot

6730 Front Street, Rio Linda

NEW DATE, TIME

May 6

Carmichael

3rd Tuesday, 6:00pm

Del Campo High School, Library

4925 Dewey Drive, Carmichael

May 19